

## Kipling Drive Wimbledon, SW19 1TW

**£385,000 Leasehold**

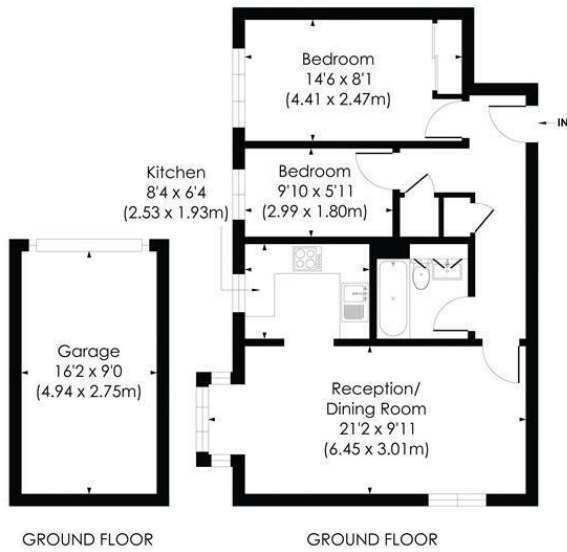


**A well presented ground floor two double bedroom purpose built apartment, located in a popular development in Wimbledon, close to Colliers Wood Tube Station, Haydons Road Thameslink and Wimbledon Town Centre. Comprising of a spacious open plan reception room with modern fitted kitchen, good sized double bedroom with built in wardrobe, second double bedroom and modern bathroom. This fantastic flat has the added benefit of a very long lease, phone entry system and a garage making it ideal for the first time buyer or investor alike.**

**KIPLING DRIVE, SW19**

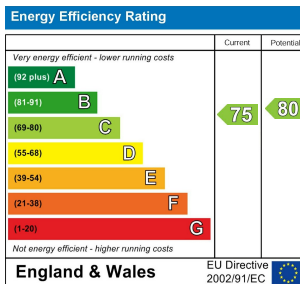
Approx. Gross Internal Floor Area

**584 Sq. ft/54.21 Sq. m**  
(Excluding Garage)



© Pixangle Property Marketing Ltd. info@pixangle.com Tel: 0208 870 2118  
This floor plan has been prepared for the purpose of illustration only in accordance with the latest RICS code of measuring practice and is not to scale. All measurements and areas are approximate and whilst every effort has been made to ensure the accuracy of the plan contained here, no responsibility is taken for any error, omission or misstatement.

- Two Double Bedroom Purpose Built Apartment
- Sought After Location
- Lovely Condition
- Close Proximity to Multiple Transport Links
- Garage
- Long Lease - 956 years remaining
- Service Charges - £1251 pa
- Ground Rent - Peppercorn
- EPC Rating C
- Council Tax Band C



**For Free Mortgage Quote and Best Mortgage Rates, call an Ellisons Mortgage Advisor on 020 8944 9494**



Although these particulars are believed to be correct, their accuracy is not guaranteed and they do not form part of any contract.

**Celebrating 30 years of successful Sales and Lettings in Merton**

